

Throgmorton St.
London EC2



Plug & Play Office
3,233 sq ft

Ready, set, go!

The available fourth floor offers 3,223 sq ft of fully fitted workspace complete with new furniture and preinstalled connectivity.

Capsule offices are developed by experienced owner Legal & General and are available on a traditional or all-inclusive managed basis.



Reception with
commissionaire



Capsule workspace
by Legal & General



Specification



No need for a
wayleave agreement
with Telcom
Preconnect providing
instant connectivity



Feature cycle
store off
main reception



Suspended feature
grid ceiling with
exposed full height
perimeter



Male and female
WCs and shower
facilities on all floors



2 x passenger
lifts



Air conditioning via
central bulkhead



Fourth Floor



The Fit Out



34 desks



3 x meeting rooms



Phone booth



6 hot desks



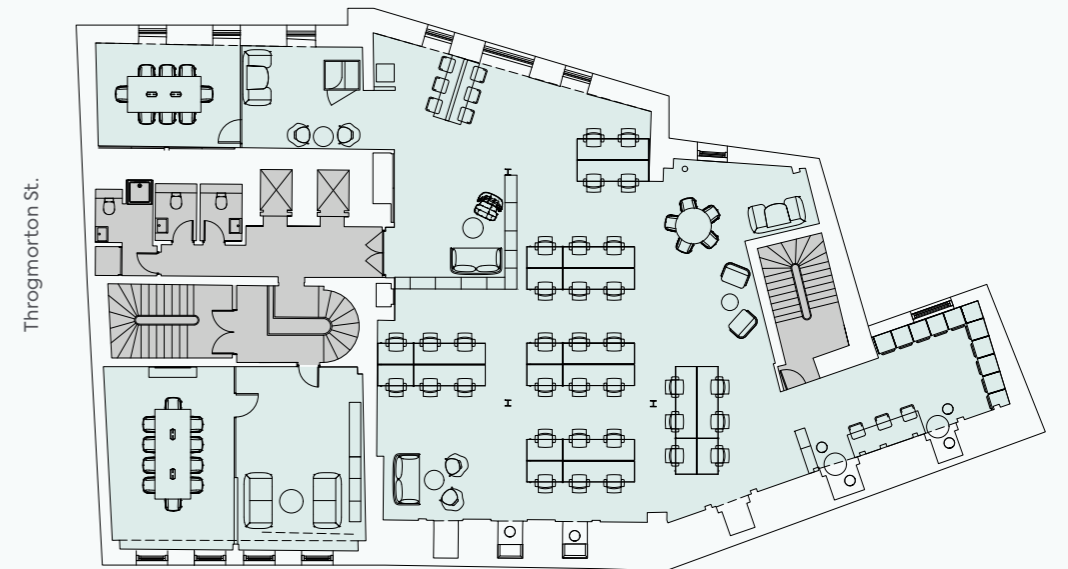
Kitchen / breakout area



Reception / waiting area

Capsule Fit Out

3,233 Sq Ft (300 Sq M)



Plan for indicative purposes only. Not to scale.

Prime city location

26 Throgmorton Street is located within 150m of the Bank of England, with extensive dining and retail destinations in the immediate area. Transport connections are excellent with Bank, Liverpool Street and Moorgate/Liverpool Street within a short walking distance with Moorgate/Liverpool Street providing direct connections to the Elizabeth line.

Local Amenities



Connections

Bank 	3 mins walk
Liverpool St. 	4 mins walk
Moorgate 	4 mins walk
Monument 	6 mins walk

Viewings

Strictly through joint letting agents.

Terms

Upon application.

Harry James
07597 415 549
hj@theworkplacecompany.co.uk

Robin Thomas
07816 061 642
rt@theworkplacecompany.co.uk

Tom Kemp
07770 721 009
tom@hk-london.com

Monique Kelliher
07462 883 358
monique@hk-london.com



THE WORKPLACE CO.

HK LONDON

MISREPRESENTATION ACT 1967 - HK Property Services Ltd and The Workplace Co. for themselves and for the Vendor. Lessors of this property for whom they act, give notice that: (i) these particulars are a general outline only, for the guidance of prospective purchasers, and do not constitute the whole or any part of an offer or contract. (ii) HK Property Services Ltd and The Workplace Co. cannot guarantee the accuracy of any description, dimensions, references to condition, necessary permissions for use and occupation and other details contained herein and prospective Purchasers or Lessors must not rely on them as statements of fact or representations and must satisfy themselves as to their accuracy. (iii) no employee of HK Property Services Ltd and The Workplace Co. has any authority to make or give any representation or warranty or enter into any contract whatever in relation to the property. (iv) prices/rents quoted in these particulars may be subject to VAT; and (v) HK Property Services Ltd and The Workplace Co. will not be liable, in negligence or otherwise, for any loss arising from the use of these particulars. November 2023.